



US 20160240810A1

(19) **United States**

(12) **Patent Application Publication**
OH et al.

(10) **Pub. No.: US 2016/0240810 A1**

(43) **Pub. Date: Aug. 18, 2016**

(54) **ORGANIC LIGHT EMITTING DISPLAY
DEVICE AND METHOD OF
MANUFACTURING AN ORGANIC LIGHT
EMITTING DISPLAY DEVICE**

(71) Applicant: **Samsung Display Co., Ltd.**, Yongin-city
(KR)

(72) Inventors: **Eon-Seok OH**, Seoul (KR); **Na-Jeong
Kim**, Yongin-si (KR); **Sang-Yeol Kim**,
Hwaseong-si (KR); **Jung-Yeon Kim**,
Suwon-si (KR); **Min-Kyung Jo**, Seoul
(KR)

(21) Appl. No.: **14/797,616**

(22) Filed: **Jul. 13, 2015**

(30) **Foreign Application Priority Data**

Feb. 13, 2015 (KR) 10-2015-0022370

Publication Classification

(51) **Int. Cl.**
H01L 51/52 (2006.01)
H01L 27/32 (2006.01)
H01L 51/00 (2006.01)
H01L 51/56 (2006.01)

(52) **U.S. Cl.**
CPC **H01L 51/5212** (2013.01); **H01L 51/5228**
(2013.01); **H01L 51/5234** (2013.01); **H01L**
51/56 (2013.01); **H01L 27/3248** (2013.01);
H01L 51/0037 (2013.01); **H01L 51/0048**
(2013.01); **H01L 2251/303** (2013.01); **H01L**
2251/308 (2013.01); **H01L 2251/305** (2013.01);
H01L 2251/301 (2013.01); **H01L 2227/323**
(2013.01)

(57) **ABSTRACT**

An organic light emitting display device may include a substrate, an anode, an auxiliary electrode, a light emitting structure, a lower cathode, and an upper cathode. The substrate may include a pixel region, a transparent region, and a boundary region between the pixel region and the transparent region. The anode may be on the pixel region. The auxiliary electrode may be on the transparent or boundary regions. The light emitting structure may be on the anode and the auxiliary electrode and extended from the pixel region to the transparent region. The lower cathode may be on the light emitting structure and made thin to increase transmittance. The upper cathode may be on the lower cathode. The thin lower cathode may be electrically connected to the auxiliary electrode via a contact hole which penetrates the light emitting structure so as to reduce a voltage drop.

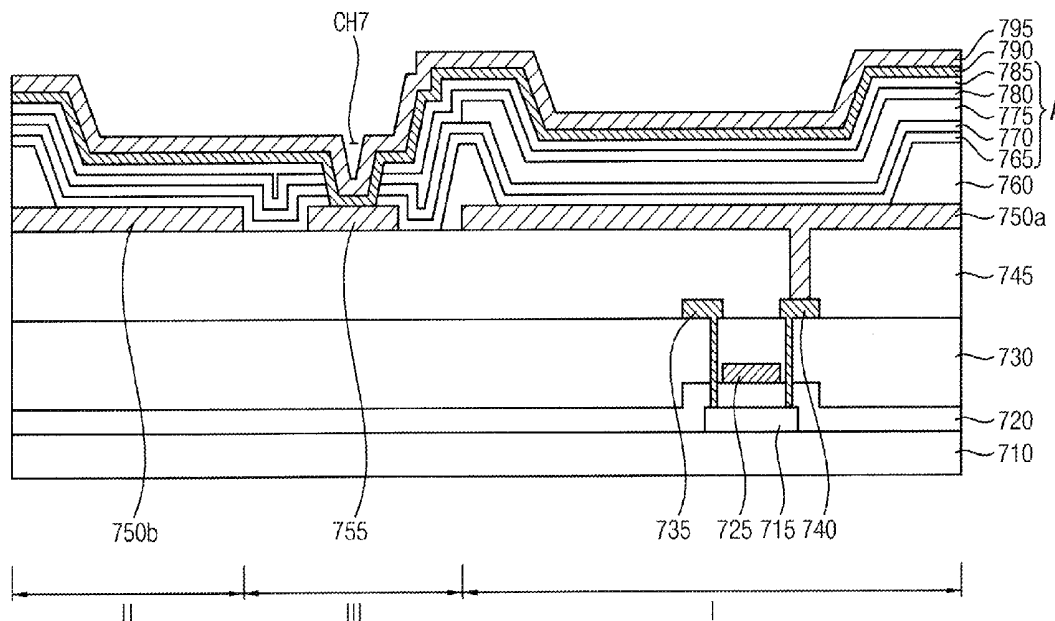


FIG. 1

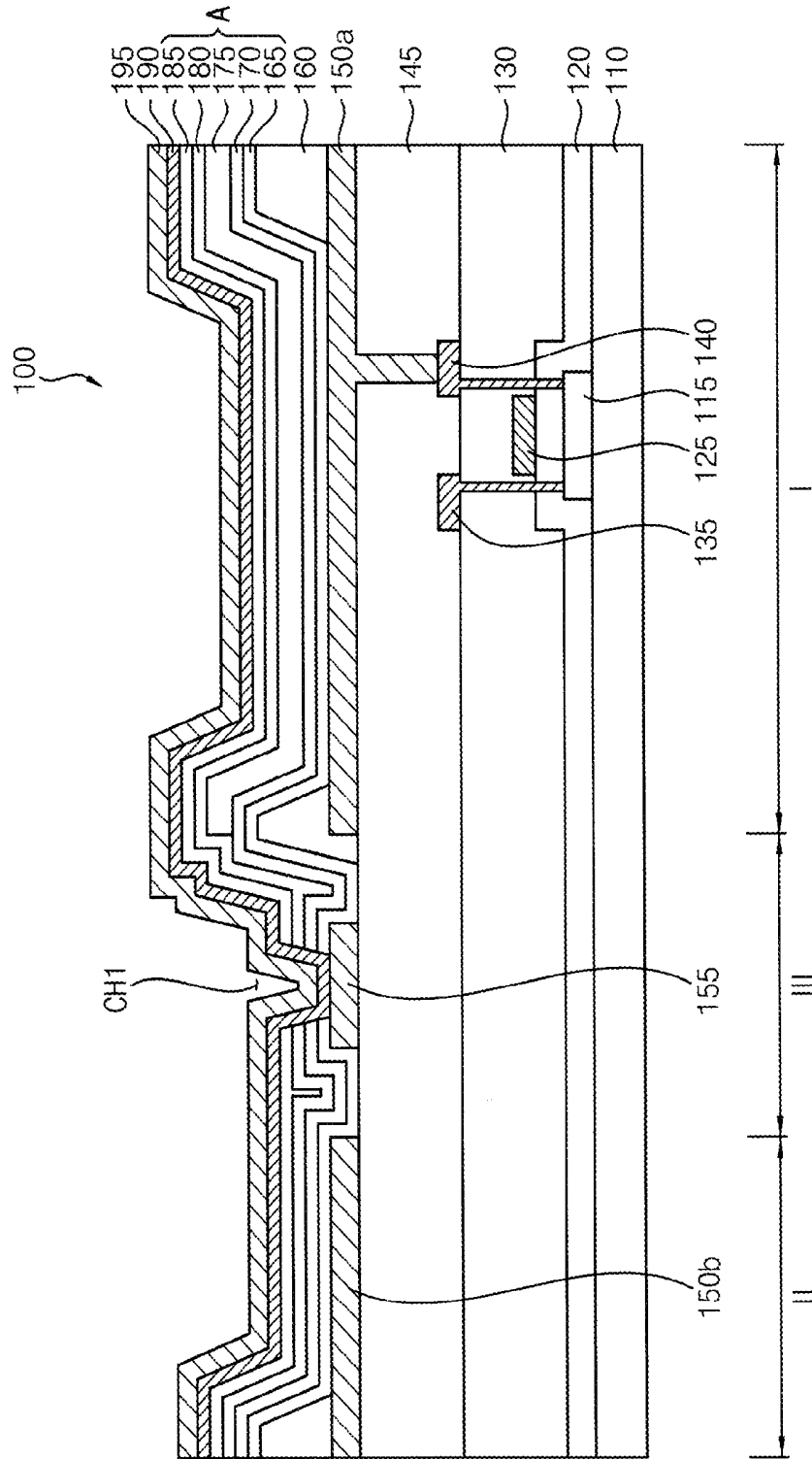


FIG. 2

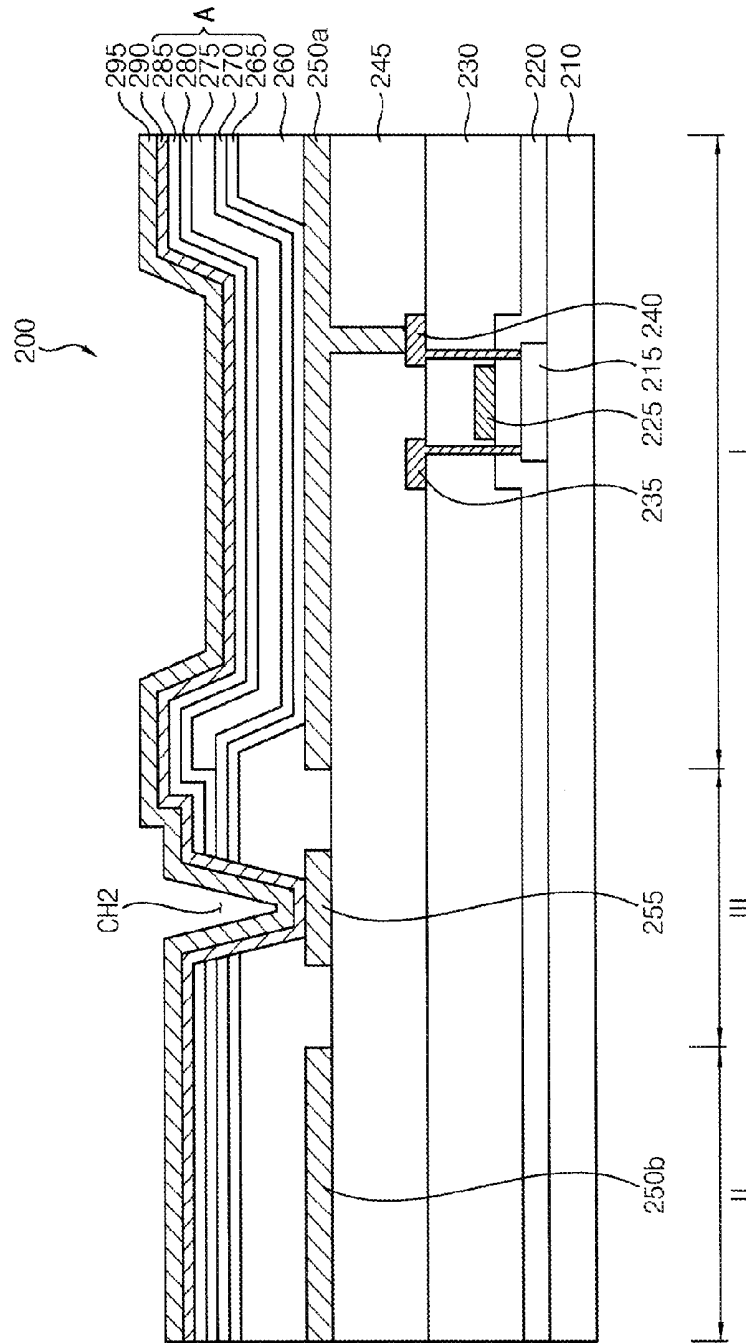


FIG. 3

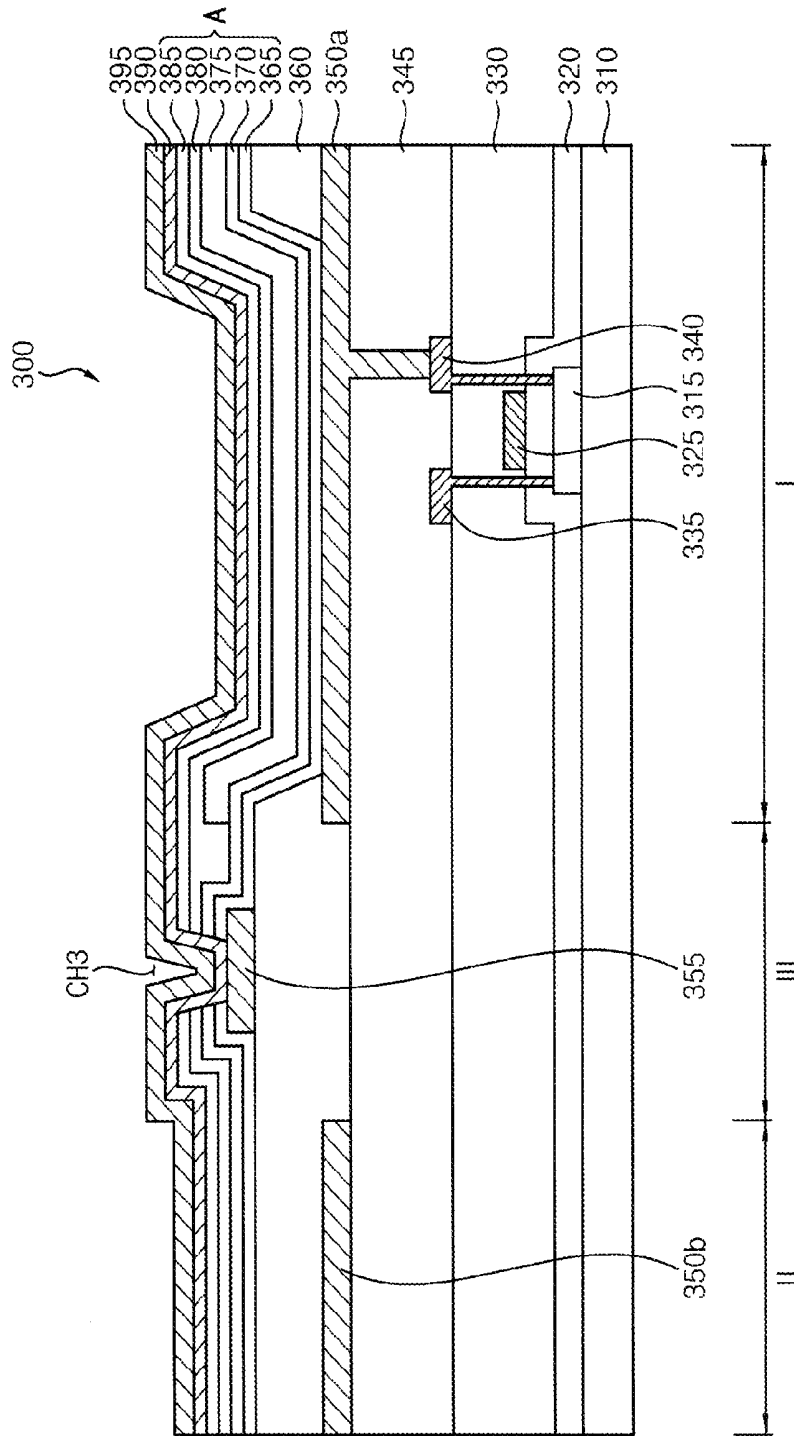


FIG. 4

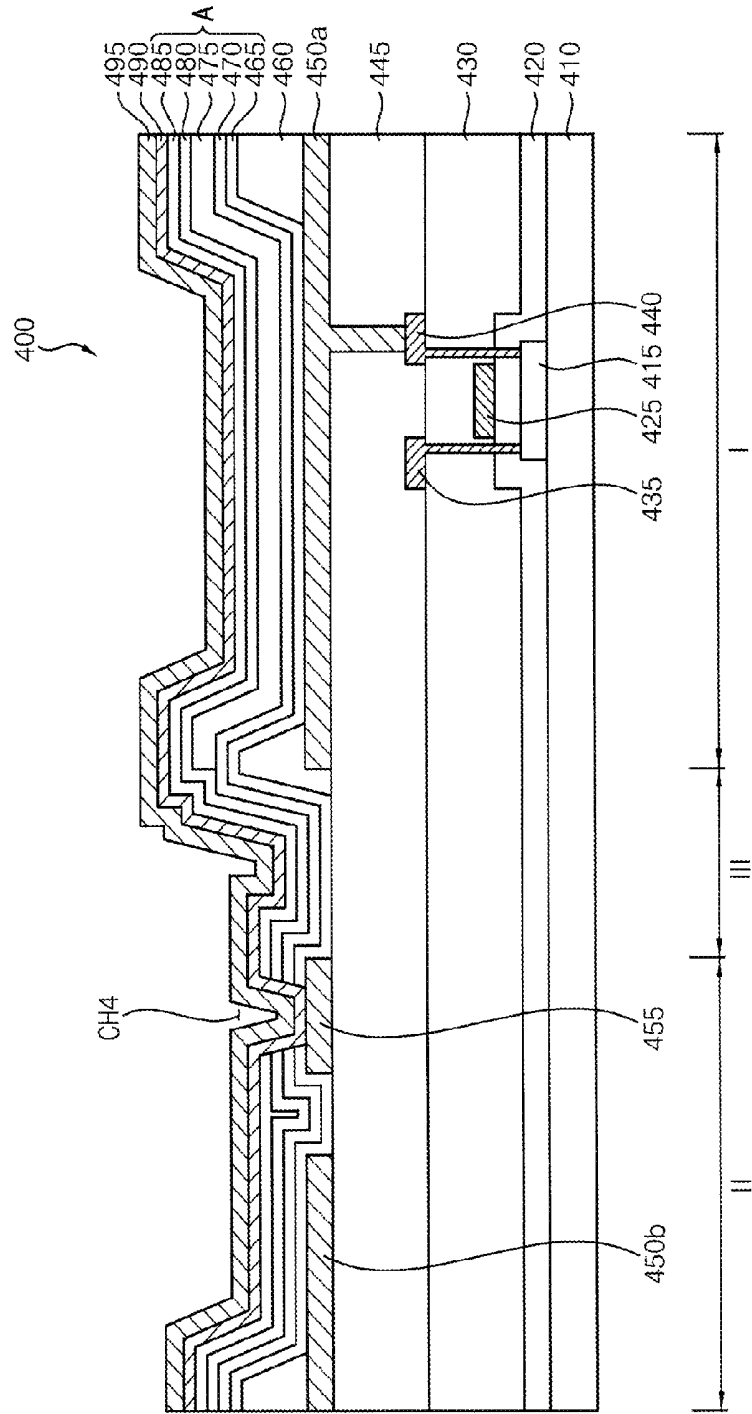


FIG. 5

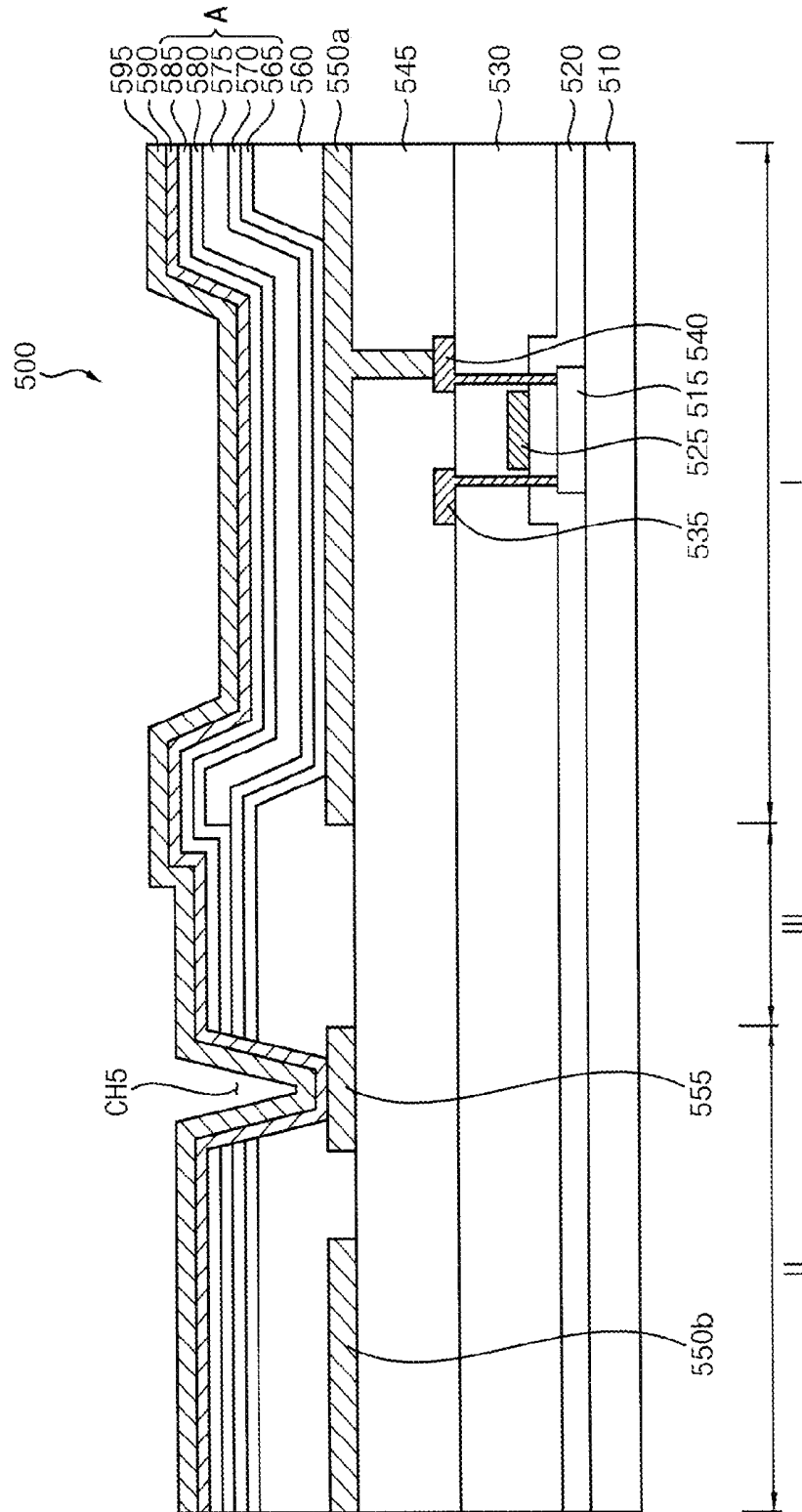


FIG. 6

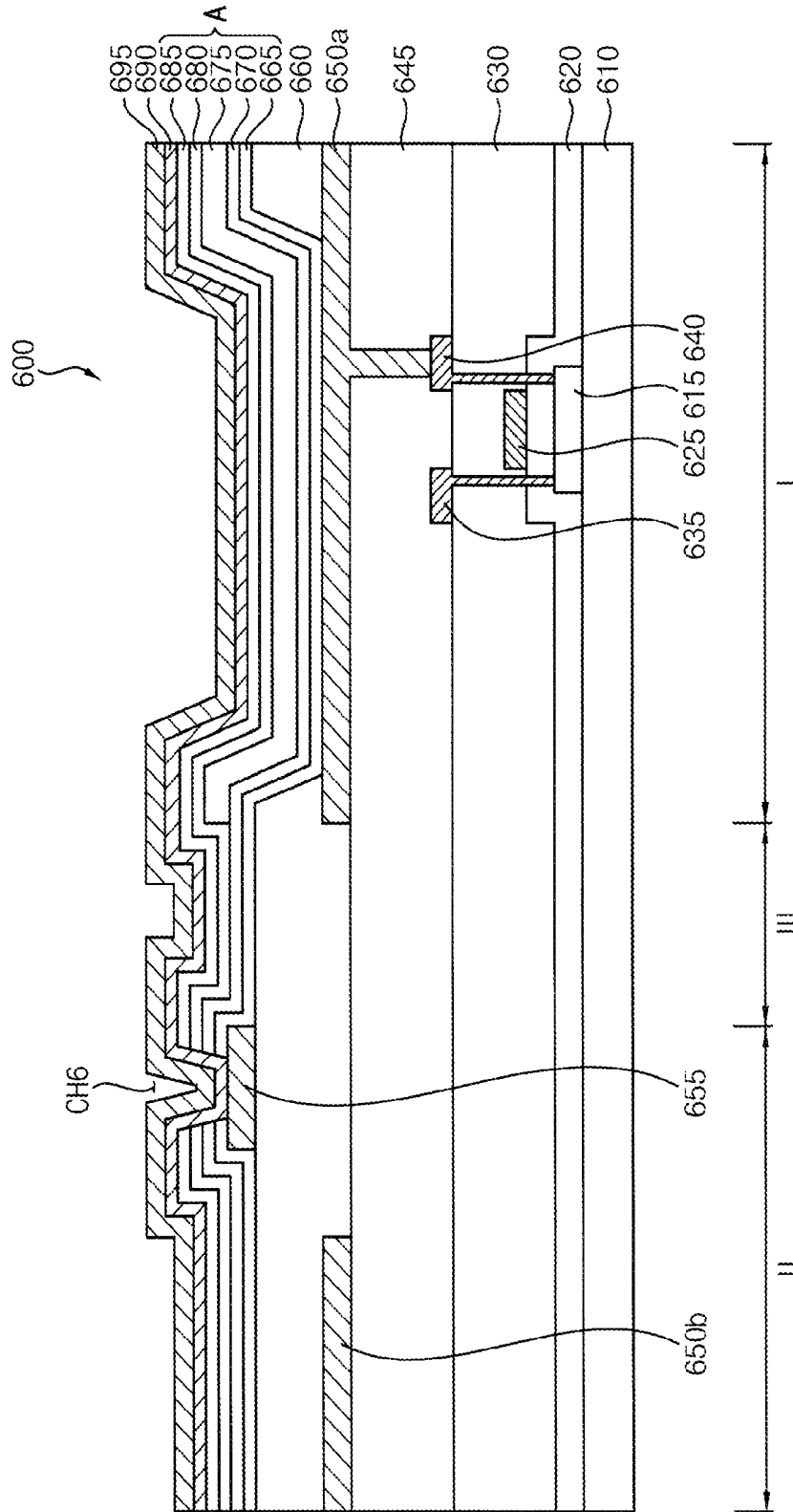


FIG. 7

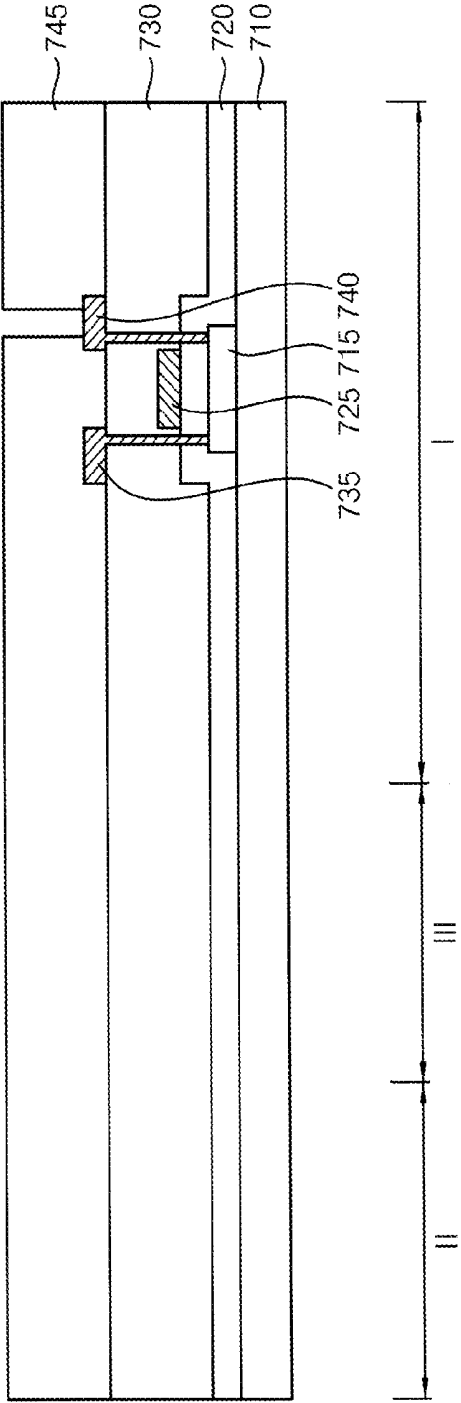


FIG. 8

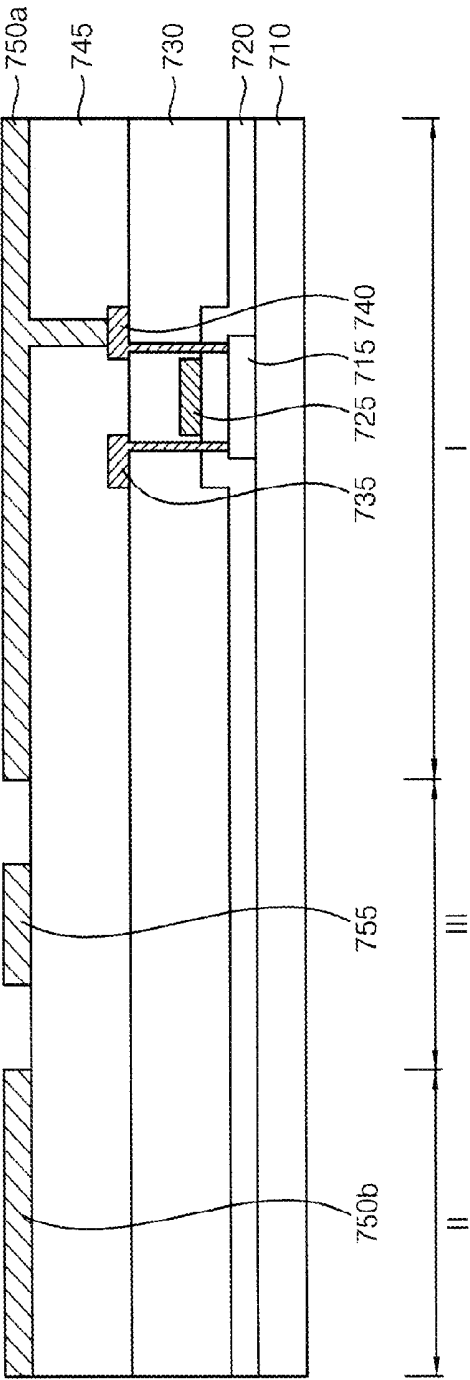


FIG. 9

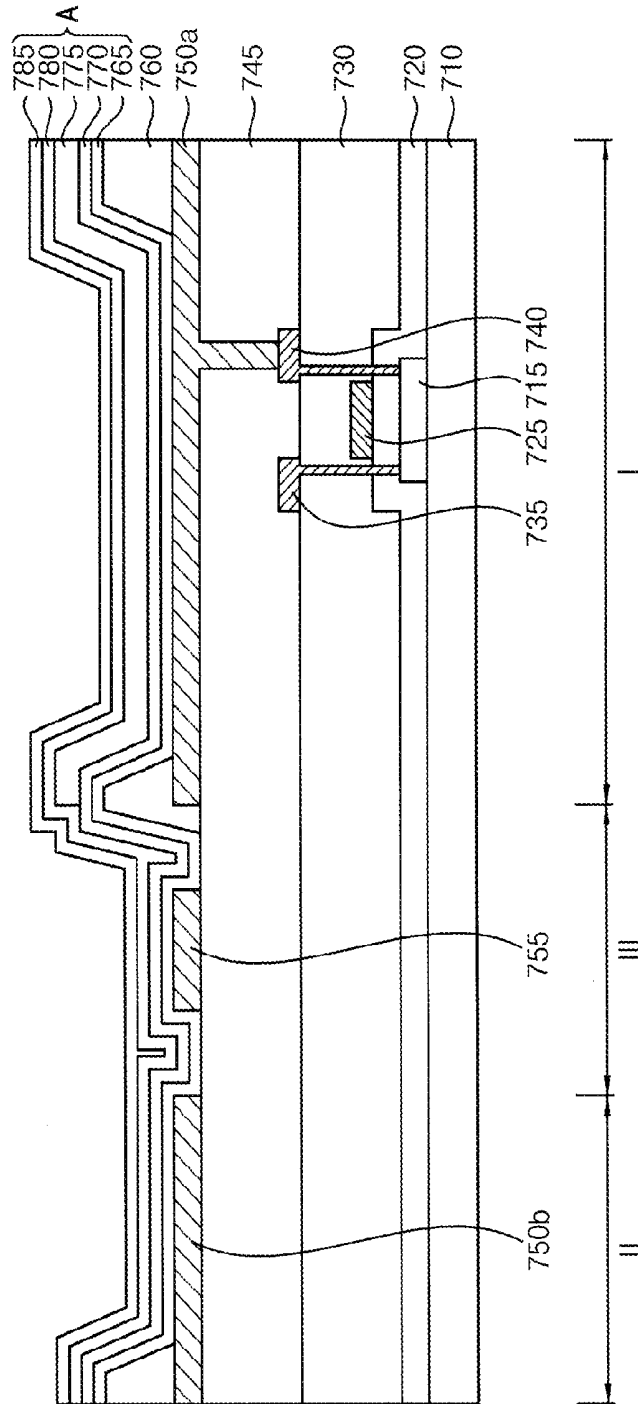


FIG. 10

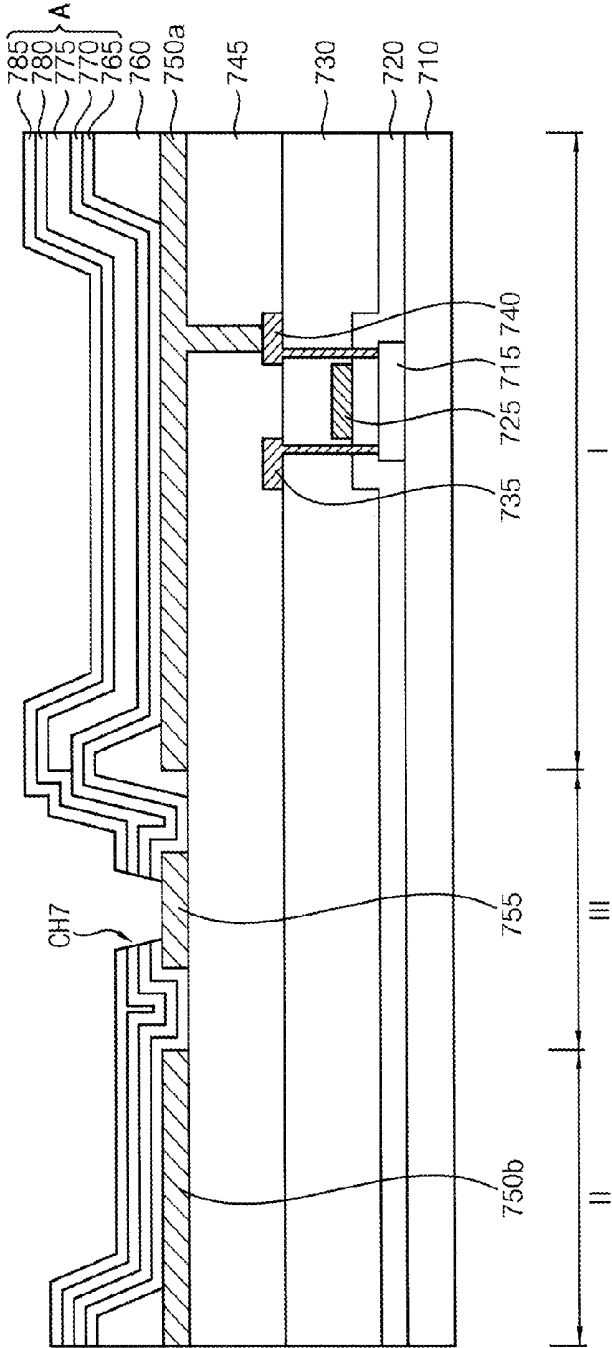


FIG. 11

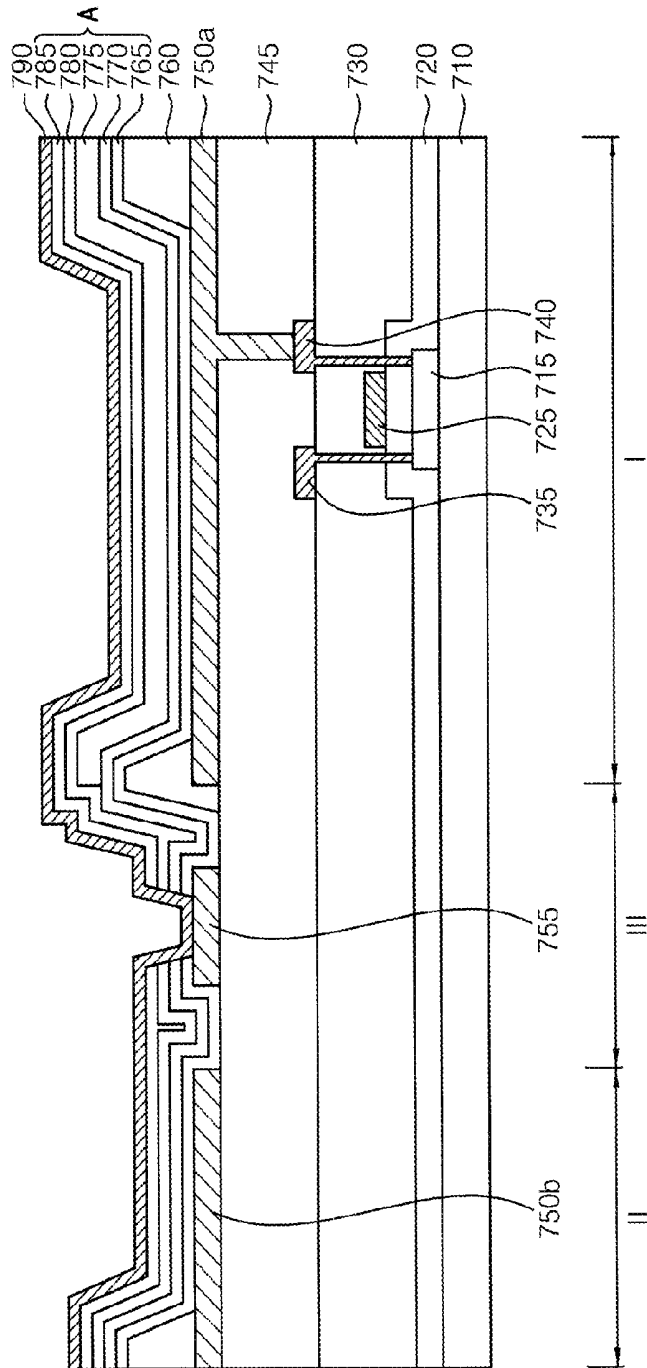
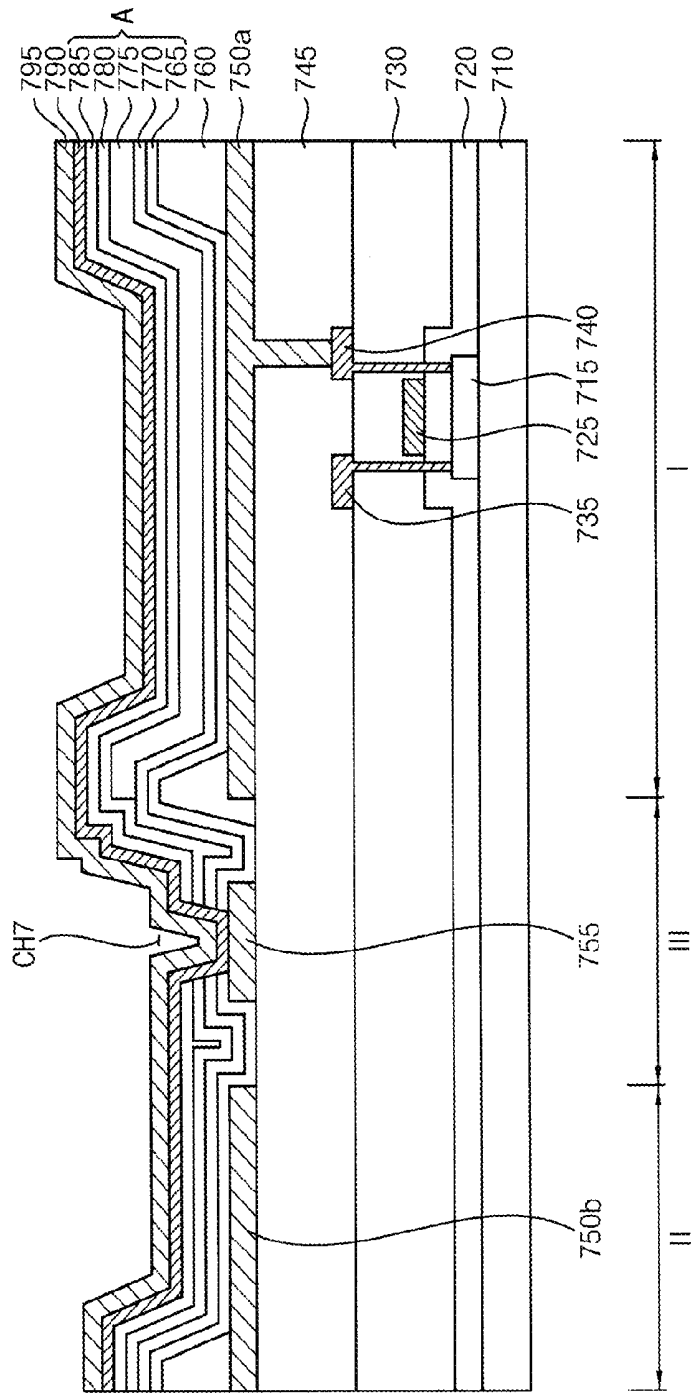


FIG. 12



**ORGANIC LIGHT EMITTING DISPLAY
DEVICE AND METHOD OF
MANUFACTURING AN ORGANIC LIGHT
EMITTING DISPLAY DEVICE**

**CROSS-REFERENCE TO RELATED
APPLICATION**

[0001] This application claims priority from and the benefit of Korean Patent Application No. 10-2015-0022370, filed on Feb. 13, 2015, which is hereby incorporated by reference for all purposes as if fully set forth herein.

BACKGROUND

[0002] 1. Field

[0003] Exemplary embodiments relate to organic light emitting display devices and methods of manufacturing the organic light emitting display devices. More particularly, exemplary embodiments relate to organic light emitting display devices including a plurality of pixel regions and transparent regions, and methods of manufacturing the organic light emitting display devices.

[0004] 2. Discussion of the Background

[0005] Recently, interest in transparent organic light emitting display (OLED) devices has increased. In general, the transparent OLED device may include a pixel region to emit light and a transparent region to transmit external light.

[0006] Methods for improving transmittance of the transparent region have been researched. A thin cathode for an organic light emitting element has been tried to improve the transmittance of the transparent region. However, quality and/or reliability of the transparent OLED device may be decreased by high resistance of the thin cathode.

[0007] The above information disclosed in this Background section is only for enhancement of understanding of the background of the inventive concept, and, therefore, it may contain information that does not form the prior art that is already known in this country to a person of ordinary skill in the art.

SUMMARY

[0008] Exemplary embodiments provide an organic light emitting display (OLED) device with an improved transmittance.

[0009] Exemplary embodiments further provide a method of manufacturing the OLED device.

[0010] Additional aspects will be set forth in the detailed description which follows, and, in part, will be apparent from the disclosure, or may be learned by practice of the inventive concept

[0011] An exemplary embodiment discloses an OLED device including a substrate, an anode, an auxiliary electrode, a light emitting structure, a lower cathode, and an upper cathode. The substrate may include a pixel region, a transparent region, and a boundary region between the pixel region and the transparent region. The anode may be on the pixel region. The auxiliary electrode may be on the transparent region or the boundary region. The light emitting structure may be on the anode and the auxiliary electrode. The light emitting structure may be extended from the pixel region to the transparent region. The lower cathode may be on the light emitting structure. The upper cathode may be on the lower

cathode. The lower cathode may be electrically connected to the auxiliary electrode via a contact hole which penetrates the light emitting structure.

[0012] An exemplary embodiment also discloses a method of manufacturing an organic light emitting display (OLED) device. In the method, a substrate is provided to include a pixel region, a transparent region, and a boundary region between the pixel region and the transparent region. An anode may be formed on the pixel region. An auxiliary electrode may be formed on the transparent region or the boundary region. A light emitting structure may be formed on the anode and the auxiliary electrode. The light emitting structure may be extended from the pixel region to the transparent region. A contact hole which penetrates the light emitting structure may be formed to expose the auxiliary electrode. A lower cathode may be formed on the light emitting structure. The lower cathode may be electrically connected to the auxiliary electrode via the contact hole. An upper cathode may be formed on the lower cathode.

[0013] The foregoing general description and the following detailed description are exemplary and explanatory and are intended to provide further explanation of the claimed subject matter.

BRIEF DESCRIPTION OF THE DRAWINGS

[0014] The accompanying drawings, which are included to provide a further understanding of the inventive concept, and are incorporated in and constitute a part of this specification, illustrate exemplary embodiments of the inventive concept, and, together with the description, serve to explain principles of the inventive concept.

[0015] FIG. 1 is a cross-sectional view illustrating an organic light emitting display (OLED) device in accordance with an exemplary embodiment.

[0016] FIG. 2 is a cross-sectional view illustrating an OLED device in accordance with an exemplary embodiment.

[0017] FIG. 3 is a cross-sectional view illustrating an OLED device in accordance with an exemplary embodiment.

[0018] FIG. 4 is a cross-sectional view illustrating an OLED device in accordance with an exemplary embodiment.

[0019] FIG. 5 is a cross-sectional view illustrating an OLED device in accordance with an exemplary embodiment.

[0020] FIG. 6 is a cross-sectional view illustrating an OLED device in accordance with an exemplary embodiment.

[0021] FIG. 7, FIG. 8, FIG. 9, FIG. 10, FIG. 11, and FIG. 12 are cross-sectional views illustrating a method of manufacturing an OLED device in accordance with an exemplary embodiment.

**DETAILED DESCRIPTION OF THE
ILLUSTRATED EMBODIMENTS**

[0022] In the following description, for the purposes of explanation, numerous specific details are set forth in order to provide a thorough understanding of various exemplary embodiments. It is apparent, however, that various exemplary embodiments may be practiced without these specific details or with one or more equivalent arrangements. In other instances, well-known structures and devices are shown in block diagram form in order to avoid unnecessarily obscuring various exemplary embodiments.

[0023] In the accompanying figures, the size and relative sizes of layers, films, panels, regions, etc., may be exaggerated

ated for clarity and descriptive purposes. Also, like reference numerals denote like elements.

[0024] When an element or layer is referred to as being “on,” “connected to,” or “coupled to” another element or layer, it may be directly on, connected to, or coupled to the other element or layer or intervening elements or layers may be present. When, however, an element or layer is referred to as being “directly on,” “directly connected to,” or “directly coupled to” another element or layer, there are no intervening elements or layers present. For the purposes of this disclosure, “at least one of X, Y, and Z” and “at least one selected from the group consisting of X, Y, and Z” may be construed as X only, Y only, Z only, or any combination of two or more of X, Y, and Z, such as, for instance, XYZ, XYY, YZ, and ZZ. Like numbers refer to like elements throughout. As used herein, the term “and/or” includes any and all combinations of one or more of the associated listed items.

[0025] Although the terms first, second, etc. may be used herein to describe various elements, components, regions, layers, and/or sections, these elements, components, regions, layers, and/or sections should not be limited by these terms. These terms are used to distinguish one element, component, region, layer, and/or section from another element, component, region, layer, and/or section. Thus, a first element, component, region, layer, and/or section discussed below could be termed a second element, component, region, layer, and/or section without departing from the teachings of the present disclosure.

[0026] Spatially relative terms, such as “beneath,” “below,” “lower,” “above,” “upper,” and the like, may be used herein for descriptive purposes, and, thereby, to describe one element or feature’s relationship to another element(s) or feature (s) as illustrated in the drawings. Spatially relative terms are intended to encompass different orientations of an apparatus in use, operation, and/or manufacture in addition to the orientation depicted in the drawings. For example, if the apparatus in the drawings is turned over, elements described as “below” or “beneath” other elements or features would then be oriented “above” the other elements or features. Thus, the exemplary term “below” can encompass both an orientation of above and below. Furthermore, the apparatus may be otherwise oriented (e.g., rotated 90 degrees or at other orientations), and, as such, the spatially relative descriptors used herein interpreted accordingly.

[0027] The terminology used herein is for the purpose of describing particular embodiments and is not intended to be limiting. As used herein, the singular forms, “a,” “an,” and “the” are intended to include the plural forms as well, unless the context clearly indicates otherwise. Moreover, the terms “comprises,” “comprising,” “includes,” and/or “including,” when used in this specification, specify the presence of stated features, integers, steps, operations, elements, components, and/or groups thereof, but do not preclude the presence or addition of one or more other features, integers, steps, operations, elements, components, and/or groups thereof.

[0028] Various exemplary embodiments are described herein with reference to sectional illustrations that are schematic illustrations of idealized exemplary embodiments and/or intermediate structures. As such, variations from the shapes of the illustrations as a result, for example, of manufacturing techniques and/or tolerances, are to be expected. Thus, exemplary embodiments disclosed herein should not be construed as limited to the particular illustrated shapes of regions, but are to include deviations in shapes that result

from, for instance, manufacturing. For example, an implanted region illustrated as a rectangle will, typically, have rounded or curved features and/or a gradient of implant concentration at its edges rather than a binary change from implanted to non-implanted region. Likewise, a buried region formed by implantation may result in some implantation in the region between the buried region and the surface through which the implantation takes place. Thus, the regions illustrated in the drawings are schematic in nature and their shapes are not intended to illustrate the actual shape of a region of a device and are not intended to be limiting.

[0029] Unless otherwise defined, all terms (including technical and scientific terms) used herein have the same meaning as commonly understood by one of ordinary skill in the art to which this disclosure is a part. Terms, such as those defined in commonly used dictionaries, should be interpreted as having a meaning that is consistent with their meaning in the context of the relevant art and will not be interpreted in an idealized or overly formal sense, unless expressly so defined herein.

[0030] FIG. 1 is a cross-sectional view illustrating an organic light emitting display (OLED) device in accordance with an exemplary embodiment.

[0031] Referring to FIG. 1, the OLED device 100 may include a substrate 110, at least one semiconductor element, anodes 150a and 150b, an auxiliary electrode 155, a pixel defining layer 160, a light emitting structure A, a contact hole CH1, a lower cathode 190, and an upper cathode 195.

[0032] The substrate 110 may include a pixel region I, a transparent region II, and a boundary region III between the pixel region I and the transparent region II. For example, the substrate 110 may include a transparent insulation substrate such as a glass substrate, a quartz substrate, a resin substrate, or the like. In some exemplary embodiments, the substrate 110 may include a flexible substrate.

[0033] At least one semiconductor element may be disposed on the pixel region I of the substrate 110. The semiconductor element may include an active pattern 115, a gate insulation layer 120, a gate electrode 125, an insulating interlayer 130, a source electrode 135, and a drain electrode 140. The semiconductor element illustrated in FIG. 1 may have a top-gate structure in which the gate electrode 125 is disposed over the active pattern 115. However, the semiconductor element may have a bottom-gate structure in which the gate electrode 125 is disposed under the active pattern 115.

[0034] The active pattern 115 may be disposed on the substrate 110. For example, the active pattern 115 may include a material having a silicon, an oxide semiconductor, or the like. The active pattern 115 is directly disposed on the substrate 110 in FIG. 1. However, in some exemplary embodiments, a buffer layer (not illustrated) may be further disposed between the substrate 110 and the active pattern 115. The buffer layer may prevent impurities (i.e., water or gas) from being diffused into the substrate 110 and/or the active pattern 115. The buffer layer may include a silicon compound, such as silicon oxide, silicon nitride, silicon oxynitride, or the like.

[0035] The gate insulation layer 120 may be disposed on the substrate 110 to cover the active pattern 115. The gate insulation layer 120 may be extended from the pixel region I to the transparent region II. The gate insulation layer 120 may insulate the gate electrode 125 from the active pattern 115. For example, the gate insulation layer 120 may include a silicon compound having insulation and transparent characteristics such as silicon oxide, silicon nitride, silicon oxynitride, or the like.

[0036] The gate electrode **125** may be disposed on the gate insulation layer **120** to partially overlap the active pattern **115**. For example, the gate electrode **125** may include metal, alloy, metallic nitride, a transparent conductive material, or the like.

[0037] The insulating interlayer **130** may be disposed on the gate insulation layer **120** to cover the gate electrode **125**. The insulating interlayer **130** may be extended from the pixel region I to the transparent region II. The insulating interlayer **130** may insulate the source and drain electrodes **135** and **140** from the gate electrode **125**. For example, the insulating interlayer **130** may include a silicon compound such as silicon oxide, silicon nitride, silicon oxynitride, or the like. When the insulating interlayer **130** includes a silicon compound, the characteristics of the insulating interlayer **130** may be substantially the same as the characteristics of the buffer layer and the gate insulation layer **120** such that external light may not be refracted or reflected. Thus, transmittance of the transparent region II may not decrease. Further, the transmittance of the transparent region II may not decrease due to a material property (i.e., transparency) of the insulating interlayer **130**.

[0038] The source and drain electrodes **135** and **140** may penetrate the gate insulation layer **120** and the insulating interlayer **130** to contact the active pattern **115**. For example, the source and drain electrodes **135** and **140** may include metal, alloy, metallic nitride, conductive metallic oxide, a transparent conductive material, or the like.

[0039] A planarization layer **145** may be disposed on the insulating interlayer **130** to cover the semiconductor element. The planarization layer **145** may be extended from the pixel region I to the transparent region II. For example, the planarization layer **145** may include a transparent organic material, such as acrylic resins, polyimide resins, epoxy-based resins, or polyester resins. Although the planarization layer **145** is disposed on the transparent region II, the amount of light that passes through the transparent region II may not decrease, because the planarization layer **145** includes a transparent organic material.

[0040] A first anode **150a** and a second anode **150b** may be disposed on the planarization layer **145**. The first anode **150a** may be disposed on the pixel region I, and the second anode **150b** may be disposed on the transparent region II. In some exemplary embodiments, the second anode **150b** may be omitted. In this case, the transmittance of the transparent region II may be improved.

[0041] As illustrated in FIG. 1, the first anode **150a** may be electrically connected to the drain electrode **140**. The first and second anodes **150a** and **150b** may include a transparent material. For example, the transparent material may include indium tin oxide (ITO), indium zinc oxide (IZO), zinc oxide (ZnO_x), tin oxide (SnO_x), gallium oxide (GaO_x), indium oxide (InO_x), or the like. In an exemplary embodiment, the OLED device **100** may be a top emission device in which emitted light exits through the lower and upper cathodes **190** and **195** to form images.

[0042] The auxiliary electrode **155** may be disposed on the boundary region III between the pixel region I and the transparent region II. In exemplary embodiments, the auxiliary electrode **155** may be on substantially the same plane as the first and second anodes **150a** and **150b**. For example, the first and second anodes **150a** and **150b**, and the auxiliary electrode **155** may be on the planarization layer **145**. In exemplary embodiments, the auxiliary electrode **155** may include substantially the same material as the first and second anodes **150a** and **150b**. Each pixel may include one auxiliary elec-

trode **155**. In some exemplary embodiments, each sub-pixel may include one auxiliary electrode **155**. The auxiliary electrode **155** may contact the lower cathode **190** via the contact hole CH1. Therefore, a voltage drop at the lower cathode **190** may be decreased or substantially removed.

[0043] The pixel defining layer **160** may be disposed on the first anode **150a** and the planarization layer **145** to define the pixel region I. The pixel defining layer **160** may include a pixel opening that defines the pixel region I. In exemplary embodiments, the pixel defining layer **160** may further include a transparent opening that defines the transparent region II. Here, the pixel defining layer **160** is only disposed on the pixel region I such that the transmittance of the transparent region II may be improved. As illustrated in FIG. 1, the light emitting structure A may be disposed along a bottom and side walls of the pixel opening, and the lower and upper cathodes **190** and **195** may be disposed along a bottom and side walls of the transparent opening. For example, the pixel defining layer **160** may include organic or inorganic materials.

[0044] The light emitting structure A may be disposed on a portion of the first anode **150a** and a portion of the pixel defining layer **160**. The light emitting structure A may include a hole injection layer (HIL) **165**, a hole transport layer (HTL) **170**, an organic light emitting layer (EL) **175**, an electron transport layer (ETL) **180**, and an electron injection layer (EIL) **185**. In exemplary embodiments, the light emitting structure A, with the exception of the EL **175**, may be extended from the pixel region I to the transparent region II. In FIG. 1, the EL **175** includes a low molecular weight organic, so that the HIL **165** and the HTL **170** are disposed under the EL **175**, and the ETL **180** and the EIL **185** are disposed on the EL **175**. However, the composition of the light emitting structure A may not be limited thereto, and various layers may be further included. When the EL **175** includes a high molecular weight organic, the HIL **165** may be excluded from the light emitting structure A.

[0045] The lower cathode **190** may be disposed on the light emitting structure A. In exemplary embodiments, the lower cathode **190** may be extended from the pixel region I to the transparent region II. As described above, since the OLED device **100** may be a top emission device, the lower cathode **190** may include a transparent material. For example, the transparent material may include gold (Au), Aluminum (Al), silver (Ag), magnesium-silver alloy (MgAg), silver-magnesium alloy (AgMg), or the like. The thickness of the lower cathode **190** may be relatively thin to improve the transmittance of the lower cathode **190**. However, the resistance of the lower cathode **190** may increase as the thickness of the lower cathode **190** decreases, so that the voltage drop at the lower cathode **190** may increase. Accordingly, the auxiliary electrode **155** may be contacted to the lower cathode **190** to improve the transmittance of the OLED device **100** and reduce the resistance of the lower cathode **190**. The auxiliary electrode **155** may be electrically connected to the lower cathode **190** via the contact hole CH1 that penetrates the light emitting structure A. Thus, the resistance of the lower cathode **190** may be minimized due to the auxiliary electrode **155**, so that the voltage drop due to the relatively thin thickness of the lower cathode **190** may be decreased. In other words, the lower cathode **190** is electrically connected to the auxiliary electrode **155** such that the resistance of the thin lower cathode **190** may be decreased. Therefore, the voltage drop by the thin lower cathode **190** may be substantially prevented.

[0046] In exemplary embodiments, the lower cathode **190** may be electrically connected to the second anode **150b** through the auxiliary electrode **155**. Thus, the resistance of the lower cathode **190** may be further reduced. In some exemplary embodiments, the lower cathode **190** may not be electrically connected to the second anode **150b**.

[0047] The thickness of the lower cathode **190** may be less than about 50 Å. The transmittance of the pixel and transparent regions I and II may be efficiently increased when the thickness of the lower cathode **190** is less than about 50 Å. For example, the transmittance of the pixel and transparent regions I and II may be greater than about 80%.

[0048] The upper cathode **195** may be disposed on the lower cathode **190** and extended from the pixel region I to the transparent region II. In exemplary embodiments, the thickness of the upper cathode **195** may be greater than the thickness of the lower cathode **190**. The upper cathode **195** may include a transparent material. For example, the transparent material may include titanium oxide (TiO_x), ITO, IZO, ZnO_x , magnesium oxide (MgO_x), poly(3,4-ethylenedioxythiophene) polystyrene sulfonate (PEDOT:PSS), graphene, and a carbon nanotube (CNT) or the like. Accordingly, the transmittance of the OLED device **100** may not be decreased although the upper cathode **195** is disposed on the transparent region II. Further, degradation of reliability of the pixel region may be prevented, and the transmittance of the transparent region II may be ensured despite the relatively thin thickness of the lower cathode **195**.

[0049] In exemplary embodiments, the transmittance of the upper cathode **195** may be greater than the transmittance of the lower cathode **190**, when the thickness of the upper and lower cathodes **195** and **190** are substantially the same. Therefore, degradation of the transmittance may be relatively small when the thickness of the upper cathode **195** is greater than the thickness of the lower cathode **190**.

[0050] In a typical transparent OLED device, the transmittance of a transparent region may be dependent on a structure of the transparent region. Since electrodes (e.g., anode and cathode) and organic layers (e.g., HIL, HTL, EL, ETL, and EIL) are disposed on the transparent region, the transmittance of the transparent region may decrease. A cathode having a relatively small thickness is suggested to improve the transmittance of the transparent region, although the resistance of the cathode may be increased. Thus, a voltage drop at the cathode may be increased, so that a quality and/or a reliability of the transparent OLED device may be decreased. In contrast, when a relatively thick cathode is formed to improve the quality and/or the reliability of the transparent OLED device, the voltage drop at the cathode may decrease. However, the transmittance of the transparent region may be decreased, and the thickness and weight of the transparent OLED device may be increased.

[0051] The OLED device **100** according to exemplary embodiments may include the lower cathode **190** and the upper cathode **195**. The lower cathode **190** may be disposed on the light emitting structure A, and the thickness of the lower cathode **190** may be relatively thin. The upper cathode **195** may be disposed on the lower cathode **190**, and the thickness of the upper cathode **195** may be relatively thick. Here, the lower cathode **190** is contacted to the auxiliary electrode **155** via the contact hole CH1 that penetrates the light emitting structure A, so that the voltage drop at the lower cathode **190** may be decreased. The upper cathode **195** may

include a transparent material such that a high transmittance of the transparent region II may be ensured.

[0052] FIG. 2 is a cross-sectional view illustrating an OLED device in accordance with some exemplary embodiments.

[0053] Detailed description on elements of the OLED device **200** which is substantially the same as, or similar to, those illustrated with reference to FIG. 1 are omitted.

[0054] Referring to FIG. 2, the OLED device **200** may include a substrate **210**, at least one semiconductor element, anodes **250a** and **250b**, an auxiliary electrode **255**, a pixel defining layer **260**, a light emitting structure A, a contact hole CH2, a lower cathode **290**, and an upper cathode **295**.

[0055] The pixel defining layer **260** may be disposed on the anode on the pixel region I (i.e., a first anode **250a**), the auxiliary electrode **255**, and the anode on the transparent region II (i.e., a second anode **250b**). The pixel defining layer **260** may include a pixel opening that defines the pixel region I. The pixel defining layer **260** may be extended to the transparent region II. For example, the pixel defining layer **260** may include transparent organic or inorganic materials. Although the pixel defining layer **260** is disposed on the transparent region II, the pixel defining layer **260** may include the transparent material such that the transmittance of the transparent region II may not decrease.

[0056] In exemplary embodiments, the lower cathode **290** may be electrically connected to the auxiliary electrode **255** via contact hole CH2 that penetrates the light emitting structure A and the pixel defining layer **260** on the boundary region III.

[0057] As described above, an additional process forming a transparent opening on the pixel defining layer **260** may not be required, so that the pixel defining layer **260** may be more easily manufactured. Also, the transmittance of the transparent region II may be ensured by the transparent material included in the pixel defining layer **260**.

[0058] FIG. 3 is a cross-sectional view illustrating an OLED device in accordance with some exemplary embodiments.

[0059] Detailed descriptions of elements of the OLED device **300** which are substantially the same as or similar to those illustrated with reference to FIG. 1 are omitted.

[0060] Referring to FIG. 3, the OLED device **300** may include a substrate **310**, at least one semiconductor element, anodes **350a** and **350b**, an auxiliary electrode **355**, a pixel defining layer **360**, a light emitting structure A, a contact hole CH3, a lower cathode **390**, and an upper cathode **395**.

[0061] The auxiliary electrode **355** may be disposed on a different plane from first and second anodes **350a** and **350b**. For example, the auxiliary electrode **335** may be disposed on the pixel defining layer **360** of the boundary region III, the first anode **350a** may be disposed on the planarization layer **345** of the pixel region I, and the second anode **350b** may be disposed on the planarization layer **345** of the transparent region II.

[0062] The pixel defining layer **360** may include a pixel opening that defines the pixel region I and be extended along the transparent region II. For example, the pixel defining layer **360** may include transparent organic or inorganic materials. As the pixel defining layer **360** is disposed on the transparent region II, an additional process that forms a transparent opening on the pixel defining layer **360** may not be needed. Therefore, the pixel defining layer **360** may be formed with the improved process efficiency and process yield.

[0063] In exemplary embodiments, the lower cathode 390 may be electrically connected to the auxiliary electrode 355 via the contact hole CH3 that penetrates the light emitting structure A on the boundary region III.

[0064] FIG. 4 is a cross-sectional view illustrating an OLED device in accordance with some exemplary embodiments.

[0065] Detailed descriptions of elements of the OLED device 400 which are substantially the same as or similar to those illustrated with reference to FIG. 1 are omitted.

[0066] Referring to FIG. 4, the OLED device 400 may include a substrate 410, at least one semiconductor element, anodes 450a and 450b, an auxiliary electrode 455, a pixel defining layer 460, a light emitting structure A, a contact hole CH4, a lower cathode 490, and an upper cathode 495.

[0067] The auxiliary electrode 455 may be disposed on a planarization layer 445 of the transparent region II. The auxiliary electrode 455 may include substantially the same material as the first and second anodes 450a and 450b. For example, the auxiliary electrode 455 may include a transparent material such as ITO, IZO, ZnO_x, SnO_x, GaO_x, InO_x, or the like. In some exemplary embodiments, the auxiliary electrode 455 may include a transparent material that is different from materials included in the first and second anodes 450a and 450b. Therefore, although the auxiliary electrode 455 is disposed on the transparent region II, the transmittance of the transparent region II may not decrease.

[0068] The pixel defining layer 460 may include a pixel opening that defines the pixel region I and a transparent opening that defines the transparent region II. As the pixel defining layer 460 is not disposed on the transparent region II, the range of the materials for the pixel defining layer 460 may be widened, and the transmittance of the transparent region II may be considerably improved.

[0069] In exemplary embodiments, the lower cathode 490 may be electrically connected to the auxiliary electrode 455 via the contact hole CH4 that penetrates the light emitting structure A on the transparent region II.

[0070] FIG. 5 is a cross-sectional view illustrating an OLED device in accordance with some exemplary embodiments.

[0071] Detailed descriptions of elements of the OLED device 500 which are substantially the same as or similar to those illustrated with reference to FIG. 1 are omitted.

[0072] Referring to FIG. 5, the OLED device 500 may include a substrate 510, at least one semiconductor element, anodes 550a and 550b, an auxiliary electrode 555, a pixel defining layer 560, a light emitting structure A, a contact hole CH5, a lower cathode 590, and an upper cathode 595.

[0073] The auxiliary electrode 555 may be disposed on the planarization layer 545 of the transparent region II. The auxiliary electrode 555 may include a transparent material, so that the auxiliary electrode 555 on the transparent region II may not substantially decrease the transmittance of the transparent region II.

[0074] The pixel defining layer 560 may be extended to the transparent region II. The pixel defining layer 560 on the transparent region II may include transparent organic or inorganic materials, so that the transmittance of the transparent region II may be substantially maintained, and the pixel defining layer 560 may be provided with a reduced manufacturing time and a reduced manufacturing cost.

[0075] In exemplary embodiments, the lower cathode 590 may be electrically connected to the auxiliary electrode 555

via the contact hole CH5 that penetrates the light emitting structure A and the pixel defining layer 560 on the transparent region II.

[0076] FIG. 6 is a cross-sectional view illustrating an OLED device in accordance with some exemplary embodiments.

[0077] Detailed descriptions of elements of the OLED device 600 which are substantially the same as or similar to those illustrated with reference to FIG. 1 are omitted.

[0078] Referring to FIG. 6, the OLED device 600 may include a substrate 610, at least one semiconductor element, anodes 650a and 650b, an auxiliary electrode 655, a pixel defining layer 660, a light emitting structure A, a contact hole CH6, a lower cathode 690, and an upper cathode 695.

[0079] The auxiliary electrode 655 may be disposed on the pixel defining layer 660 of the transparent region II. Accordingly, the auxiliary electrode 655 may be on a different plane from the anodes 650a and 650b. For example, the auxiliary electrode 655 may be disposed on the pixel defining layer 660 of the transparent region II, and first and second anodes 650a and 650b may be disposed on the planarization layer 645 of the pixel and transparent regions I and II, respectively.

[0080] The pixel defining layer 660 may include a pixel opening that defines the pixel region I and be extended along the transparent region II. For example, the pixel defining layer 660 may include transparent organic or inorganic materials.

[0081] FIGS. 7 to 12 are cross-sectional views illustrating a method of manufacturing an OLED device in accordance with exemplary embodiments.

[0082] In FIGS. 7 to 12, although the method of manufacturing the OLED device is described with respect to a device that is substantially the same as or similar to the exemplary embodiment illustrated with reference to FIG. 1, those skilled in the art may readily understand that the OLED devices 200 to 600 in FIGS. 2 to 6 may be manufactured through obvious modifications, such as deposition processes and etching processes.

[0083] Referring to FIG. 7, a semiconductor element and a planarization layer 745 that covers the semiconductor element may be formed on a substrate 710.

[0084] An active pattern forming layer (not illustrated) may be formed on the substrate 710 using a material that contains silicon or an oxide semiconductor, and then the active pattern 715 may be formed on the substrate 710 through a predetermined patterning process.

[0085] A gate insulation layer 720 may be formed on the active pattern 715. For example, the gate insulation layer 720 may be formed using an insulating material, such as a silicon compound (i.e., silicon nitride, silicon oxide, silicon oxynitride, or the like). The gate insulation layer 720 may be formed as a single-layer or may be multi-layer considering the transmittance of the OLED device.

[0086] A gate electrode 725 may be formed on the gate insulation layer 720. The gate electrode 725 may partially overlap the active pattern 715. For example, the gate electrode 725 may include metal, alloy, metallic nitride, conductive metallic oxide, a transparent conductive material, or the like.

[0087] An insulating interlayer 730 may be formed on the gate insulation layer 720 and cover the gate electrode 725. In exemplary embodiments, the insulation interlayer 730 may be formed having thickness sufficient such that the insulation interlayer 730 may have a flat top surface. For example, the

insulation interlayer 730 may include a silicon compound, such as silicon nitride, silicon oxide, silicon oxynitride, or the like.

[0088] A source electrode 735 and a drain electrode 740 may be contacted to the active pattern 715 via a contact hole that penetrates the gate insulation layer 720 and the insulation interlayer 730. For example, the source and drain electrodes 735 and 740 may include metal, alloy, metallic nitride, conductive metallic oxide, a transparent conductive material, or the like. Therefore, the semiconductor element that includes the active pattern 715, the gate insulation layer 720, the gate electrode 725, the insulation interlayer 730, the source electrode 735 and the drain electrode 740 may be provided on the substrate 710.

[0089] The planarization layer 745 may be formed on the insulation interlayer 730 and cover the semiconductor element. For example, the planarization layer 745 may include a transparent organic material, such as acrylic resins, polyimide resin, epoxy-based resins, or polyester resins.

[0090] Referring to FIG. 8, anodes 750a and 750b and an auxiliary electrode 755 may be formed on the planarization layer 745. The anodes 750a and 750b and the auxiliary electrode 755 may be simultaneously formed using one mask. For example, the first anode 750a may be formed on the planarization layer 745 of the pixel region I, the second anode 750b may be formed on the planarization layer 745 of the transparent region II, and the auxiliary electrode 755 may be formed on the planarization layer 745 of the boundary region III. In some exemplary embodiments, the first and second anodes 750a and 750b, and the auxiliary electrode 755 may include TiO_x , ITO, IZO, ZnO_x , MgO_x , PEDOT:PSS, graphene, CNT, or the like. Therefore, the auxiliary electrode 755 may be formed without an additional process, so that manufacturing costs may be reduced and manufacturing processes may be simplified.

[0091] Referring to FIG. 9, a pixel defining layer 760 and a light emitting structure A may be formed on the planarization layer 745 and cover the first and second anodes 750a and 750b, and the auxiliary electrode 755. For example, after formation of the pixel defining layer 760, a hole injection layer 765, a hole transport layer 770, an organic light emitting layer 775, an electron transport layer 780, and an electron injection layer 785 may be sequentially formed to acquire the light emitting structure A.

[0092] Referring to FIG. 10, the light emitting structure A may be partially removed by a laser drilling process to selectively form a contact hole CH7. The laser drilling process is used to form the contact hole CH7 such that the contact hole CH7 may be selectively formed on a desired area. To remove generated particles during the contact hole CH7 forming process, the laser drilling process may be performed under an inert gas atmosphere such as nitrogen (N_2) or argon (Ar). However, as the light emitting structure A is exposed to the inert gas, an interface of the light emitting structure A may become unstable. Therefore, in some exemplary embodiments, considering possible damage to the light emitting structure A, the laser drilling process may be performed under a vacuum atmosphere. When the contact hole CH7 is formed under the vacuum atmosphere, the damage on the light emitting structure A may be minimized so that a possible leakage current caused by the damage on the light emitting structure A may be fully prevented.

[0093] Referring to FIG. 11, a lower cathode 790 may be formed on the electron injection layer 785. Although the

lower cathode 790 may be formed to have a relatively small thickness, the lower cathode 790 may be formed along a bottom and side walls of the contact hole CH7 and electrically connected to the auxiliary electrode 755 at the bottom of the contact hole CH7. Accordingly, a voltage drop at the lower cathode 790, which may be increased by the thin thickness of the lower cathode 790, may be reduced. For example, the lower cathode 790 may include Au, Al, Ag, magnesium-silver alloy, silver-magnesium alloy, or the like.

[0094] Referring to FIG. 12, an upper cathode 795 may be formed on the lower cathode 790. The upper cathode 795 may be formed by a sputtering process, a deposition process using plasma, or the like. Damage of the light emitting structure A when the upper cathode 795 is formed may be prevented by the lower cathode 790. The upper cathode 795 may include TiO_x , ITO, IZO, ZnO_x , MgO_x , PEDOT:PSS, graphene, CNT, or the like. The thickness of the upper cathode 795 may be limited under a certain value to maintain the transmittance of the upper cathode 795. However, the upper cathode 795 may be formed with a relatively large thickness within a certain range in which the transmittance of the upper cathode 795 may not be decreased, so that the resistance of the upper cathode 795 may not be increased.

[0095] In an OLED device according to exemplary embodiments, the auxiliary electrode may be electrically connected to the lower cathode via the contact hole between the pixel region and the transparent region to reduce a resistance of the lower cathode. Moreover, the upper cathode including a transparent material may be formed on the lower cathode to improve transmittance of the transparent region.

[0096] In the method of manufacturing the OLED device according to exemplary embodiments, the light emitting structure may be selectively etched by the laser drilling process to form the contact hole, so that process yield and process efficiency may be improved, and a voltage drop at the lower cathode may be decreased. Furthermore, damage at the lower cathode may be prevented in the upper cathode forming process. Therefore, the OLED device having high quality and high reliability may be provided.

[0097] Although a few exemplary embodiments of the OLED devices and the methods of manufacturing the OLED devices have been described with reference to the figures, those skilled in the art will readily appreciate that many modifications are possible in the exemplary embodiments without materially departing from the novel teachings and advantages of the present inventive concept.

[0098] The present inventive concept may be applied to any electronic device including a transparent organic light emitting display device. For example, the present inventive concept may be applied to display devices for a vehicle, a ship or a plane, mobile communication devices, display devices for a display or information offering, medical display devices, etc.

[0099] Although certain exemplary embodiments and implementations have been described herein, other embodiments and modifications will be apparent from this description. Accordingly, the inventive concept is not limited to such embodiments, but rather to the broader scope of the presented claims and various obvious modifications and equivalent arrangements.

What is claimed is:

1. An organic light emitting display (OLED) device, comprising:

a substrate comprising a pixel region, a transparent region, and a boundary region between the pixel region and the transparent region;

an anode disposed on the pixel region;

an auxiliary electrode disposed on the transparent region or the boundary region;

a light emitting structure disposed on the anode and the auxiliary electrode, the light emitting structure being extended from the pixel region to the transparent region;

a lower cathode disposed on the light emitting structure; and

an upper cathode disposed on the lower cathode, wherein the lower cathode is electrically connected to the auxiliary electrode via a contact hole which penetrates the light emitting structure.

2. The OLED device of claim **1**, wherein a thickness of the lower cathode is less than the thickness of the upper cathode.

3. The OLED device of claim **1**, wherein a light transmittance of the upper cathode is greater than a light transmittance of the lower cathode.

4. The OLED device of claim **3**, wherein the upper cathode comprises at least one material selected from the group consisting of titanium oxide (TiO_x), indium tin oxide (ITO), indium zinc oxide (IZO), zinc oxide (ZnO_x), magnesium oxide (MgO_x), poly(3,4-ethylenedioxyphenylene) polystyrene sulfonate (PEDOT:PSS), graphene, and carbon nanotube (CNT).

5. The OLED device of claim **1**, wherein the lower cathode comprises at least one material selected from the group consisting of gold (Au), aluminum (Al), silver (Ag), magnesium-silver alloy (MgAg), and silver-magnesium alloy (AgMg).

6. The OLED device of claim **1**, wherein the anode and the auxiliary electrode are disposed on substantially the same plane.

7. The OLED device of claim **6**, wherein the anode and the auxiliary electrode comprise substantially the same material.

8. The OLED device of claim **7**, wherein the anode and the auxiliary electrode comprise a transparent material.

9. The OLED device of claim **1**, wherein the anode and the auxiliary electrode are disposed on different planes.

10. The OLED device of claim **9**, wherein the anode and the auxiliary electrode comprise different materials.

11. The OLED device of claim **10**, wherein a light transmittance of the auxiliary electrode is greater than the light transmittance of the anode.

12. The OLED device of claim **11**, wherein the auxiliary electrode is disposed on the transparent region.

13. The OLED device of claim **1**, further comprising a semiconductor element electrically connected to the anode.

14. The OLED device of claim **1**, wherein the light emitting structure comprises:

a hole injection layer disposed on the anode;

a hole transport layer disposed on the hole injection layer;

an organic light emitting layer disposed on the hole transport layer;

an electron transport layer disposed on the organic light emitting layer; and

an electron injection layer disposed on the electron transport layer.

15. A method of manufacturing an organic light emitting display (OLED) device, comprising:

providing a substrate comprising a pixel region, a transparent region, and a boundary region between the pixel region and the transparent region;

forming an anode on the pixel region;

forming an auxiliary electrode on the transparent region or the boundary region;

forming a light emitting structure on the anode and the auxiliary electrode, the light emitting structure being extended from the pixel region to the transparent region;

forming a contact hole which penetrates the light emitting structure to expose the auxiliary electrode;

forming a lower cathode on the light emitting structure, the lower cathode being electrically connected to the auxiliary electrode via the contact hole; and

forming an upper cathode on the lower cathode.

16. The method of claim **15**, wherein the contact hole is formed by a laser drilling process.

17. The method of claim **16**, wherein the laser drilling process is performed under an inert gas atmosphere.

18. The method of claim **16**, wherein the laser drilling process is performed under a vacuum atmosphere.

19. The method of claim **15**, further comprising forming a semiconductor element electrically connected to the anode.

20. The method of claim **15**, wherein forming the light emitting structure comprises:

forming a hole injection layer on the anode;

forming a hole transport layer on the hole injection layer;

forming an organic light emitting layer on the hole transport layer;

forming an electron transport layer on the organic light emitting layer; and

forming an electron injection layer on the electron transport layer.

* * * * *

专利名称(译)	有机发光显示装置和制造有机发光显示装置的方法		
公开(公告)号	US20160240810A1	公开(公告)日	2016-08-18
申请号	US14/797616	申请日	2015-07-13
[标]申请(专利权)人(译)	三星显示有限公司		
申请(专利权)人(译)	三星DISPLAY CO. , LTD.		
当前申请(专利权)人(译)	三星DISPLAY CO. , LTD.		
[标]发明人	OH EON SEOK KIM NA JEONG KIM SANG YEOL KIM JUNG YEON JO MIN KYUNG		
发明人	OH, EON-SEOK KIM, NA-JEONG KIM, SANG-YEOL KIM, JUNG-YEON JO, MIN-KYUNG		
IPC分类号	H01L51/52 H01L27/32 H01L51/00 H01L51/56		
CPC分类号	H01L51/5212 H01L51/5228 H01L51/5234 H01L51/56 H01L27/3248 H01L2227/323 H01L51/0048 H01L2251/303 H01L2251/308 H01L2251/305 H01L2251/301 H01L51/0037 H01L27/3246 H01L27/326		
优先权	1020150022370 2015-02-13 KR		
其他公开文献	US9530980		
外部链接	Espacenet USPTO		

摘要(译)

有机发光显示装置可包括基板，阳极，辅助电极，发光结构，下阴极和上阴极。衬底可以包括像素区域，透明区域和像素区域与透明区域之间的边界区域。阳极可以在像素区域上。辅助电极可以在透明或边界区域上。发光结构可以在阳极和辅助电极上并且从像素区域延伸到透明区域。下阴极可以在发光结构上并且变薄以增加透射率。上阴极可以在下阴极上。薄的下阴极可以经由接触孔电连接到辅助电极，该接触孔穿透发光结构以减小电压降。

